

Press photos

April 2010

Double Infinity
Van Abbemuseum and Arthub Asia
Dutch Culture Centre, Shanghai
29/04 – 23/05/2010

Download press photos: www.vanabbemuseum.nl/en/press

Royalty-free use of photographs is licensed in the context of the exhibition *Double Infinity*



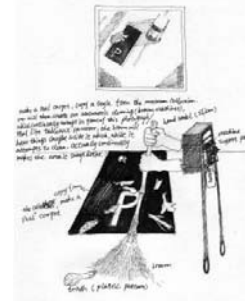
LARA ALMARCEGUI, *A Wasteland in the Shenzhen River*, 2009, photograph used for publication, 2009–10 Shenzhen and Hong Kong Bi-city Biennial. Courtesy of the artist



ASIA ART ARCHIVE, *Xu Tan From Jean-Paul Sartre to Teresa Teng: Contemporary Cantonese Art in the 1980s*, 2010, film. Courtesy of Asia Art Archive



JOHANNA BILLING, *Magical World*, 2005, video projection. Courtesy of the artist and the Van Abbemuseum, Eindhoven



COMFORTABLE COLLECTIVE, 2009, mixed media, Participating artists: Gao Mingyan, Jin Shan, Li Mu, Lu Jiawei and Tang DiXin. For the X Baltic Triennial, Vilnius Lithuania. Study sketches for the *Double Infinity* work, 2010. Courtesy of Comfortable Collective and Arthub Asia



CAO FEI / CHINA TRACY, *The Birth of RMB City*, 2009, Video, 10 min 32 sec. RMB City is developed by Cao Fei (SL: China Tracy) & Vitamin Creative Space. Courtesy of Vitamin Creative Space



ALICIA FRAMIS, *Lost Astronaut*, 2009, Performance 09 documentation performance and Moon Life, studies. Courtesy of the artist and Annet Gelink Gallery, Amsterdam

Press photos

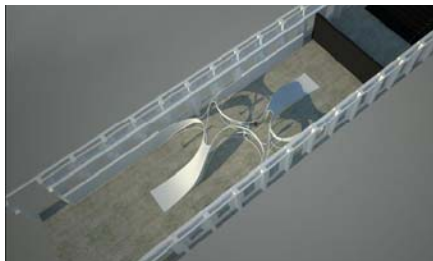
April 2010



LIU GANG, *OUR NETHERLANDS*, 2009, study sketches for the Double Infinity work
Courtesy of the artist



JOB KOELEWIJN, *Fragmentarium*, 2001, metal, Plexiglas, multiple lenses. Courtesy of the artist, Peter Cox and the Van Abbemuseum, Eindhoven



WANG ZHENFEI, Exhibition design sketches for *Double Infinity* Shanghai. World Expo, 2010
Courtesy of the artist



JOHN KÖRMELING, *Hot Spring*, 2002. Collection Van Abbemuseum. Photo: Peter Cox



SURASI KUSOLWONG, *Golden Chance (I make nothing, you found nothing)*, 2008, Industrial thread waste, mirrors and hidden gold necklaces
Platform Show, Installation view at Kukje Gallery, Seoul. Courtesy of the artist and Myoung-Rae Park



EL LISSITZY, *New Man*, 1923, model, acrylic, wood, metal, designed and constructed by Henry Milner
Courtesy of John Milner, Peter Cox and the Van Abbemuseum, Eindhoven

Press photos

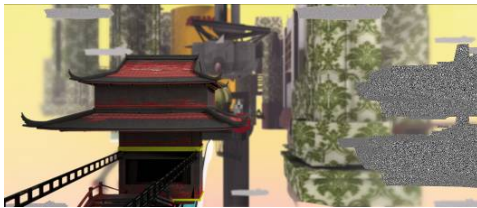
April 2010



DAVID MALJKOVIC, *Scene for New Heritage*, 2004, video / DVD / Colour / Sound, 4:33 mins. Courtesy of the artist and Annet Gelink Gallery, Amsterdam



JULIKA RUDELIUS, *Rites of Passage*, 2008, still from 2-channel HD video installation, 14 mins



SPEEDISM, *IAHGNAHS ONHCET –Charlotte's Memoires*, 2009, CGI film. Produced in collaboration with Theatre in Motion, Beijing, Crystal CG, and Arthub Asia. Courtesy of the artists and Arthub Asia



XU TAN, *Keywords School Guangzhou*, 2008, Vitamin Creative Space, Guangzhou. Courtesy of the artist and Vitamin Creative Space



ZHOU XIAOHU, *Golden Needle*, 2008, LED installation. Installed in Shanghai eArt Festival head quarter, Xujiahui. Produced by Far East Far West LTD. Courtesy of Arthub and eArt Festival



XIJING MEN, *I Love Xijing*, 2009, performance The Urban Planning of Xijing. Courtesy of the artists